



भारतीय प्रबंध संस्थान सिरमौर

INDIAN INSTITUTE OF MANAGEMENT SIRMAUR  
Himachal Pradesh

IIM SIRMAUR  
KNOWLEDGE . LEADERSHIP

## Post Graduate Certificate

# in Sustainability Strategy & ESG Leadership

*with AI Application & Experiential Learning*

<b>Duration</b> 6 Months	<b>Format</b> Live Online	<b>Timing</b> 10:30am-1:30pm every Sunday	<b>Campus Immersion</b> 2 Days
<b>Alumni Status</b> Executive Alumni	<b>Certification</b> IIM Sirmour	<b>Program Fee</b> ₹1,27,400 incl. GST & Campus Stay	<b>Program Commencement</b> July 2026



IIM Sirmour Campus



# The Global Imperative

## Sustainability Is **Reshaping** the Global Economy

The transition to a sustainable economy is no longer a choice. It is a structural shift driven by regulation, investor pressure, consumer demand, and planetary limits. Professionals equipped with ESG expertise are at the centre of this transformation.

<b>\$40T+</b> Global Assets under ESG Management <i>Bloomberg Intelligence, 2024</i>	<b>100M</b> New Green Jobs Expected Globally by 2030 <i>ILO World Employment Report</i>	<b>80M</b> ESG disclosures mandated in countries <i>IFRS Foundation, 2025</i>	<b>86M</b> Global Investors Endorse ESG <i>PwC Global Investor Survey, 2024</i>
--	---	---	---

## The ESG Framework Explained



### Environmental

Your commitment to future generations

- Climate change & GHG emissions
- Natural resource depletion
- Wastes, hazardous materials & pollution
- Deforestation & biodiversity loss



### Social

How returns are shared with communities

- Working conditions & labour rights
- Health, safety & employee diversity
- Economic returns, social responsibility & community impact
- Supply chain ethics



### Governance

Your licence to operate with integrity

- Ethical leadership
- Transparent decision making
- Checks & balances
- ESG reporting & audit standards

# India's ESG Landscape

Regulation Meets Opportunity.  
The Talent Gap Is Real.

## Regulatory Acceleration Timeline



## The Talent Gap

**80M**

of Indian businesses are seeking sustainability-skilled professionals

*India Route to Green Economy Report, 2024*

**30M**

green jobs projected in India by 2050

*ILO / CEEW Analysis*

**6x**

growth in ESG-related job postings in India since 2020

*LinkedIn Economic Graph, 2024*

## Career Trajectory with ESG Expertise

Entry  
**ESG Analyst**  
₹6–12 LPA

Mid-Career  
**Sustainability Manager**  
₹12–25 LPA

Specialist  
**ESG Consultant / Auditor**  
₹15–35 LPA

Leadership  
**Head of Sustainability / CSO**  
₹30–80+ LPA

*Indicative salary ranges for the Indian market. Source: Naukri, LinkedIn Salary Insights, 2024–25.*

# The IIM Sirmaur Difference

Rooted in the Himalayas.  
Belongs to the IIM System.



**Est. 2015**

Govt. of India institution  
(IIM Act 2017)

**#51**

NIRF Management  
Ranking, 2025

**100%**

Placement Record  
(MBA 2025)

Established in 2015 under the IIM Act of Parliament, IIM Sirmaur is a Government of India institution set in the foothills of the lower Himalayas, making it an ideal place to study sustainability. Its proximity to Himalayan rivers, forests, & mountain ecosystems gives it a natural alignment with sustainability as a discipline.

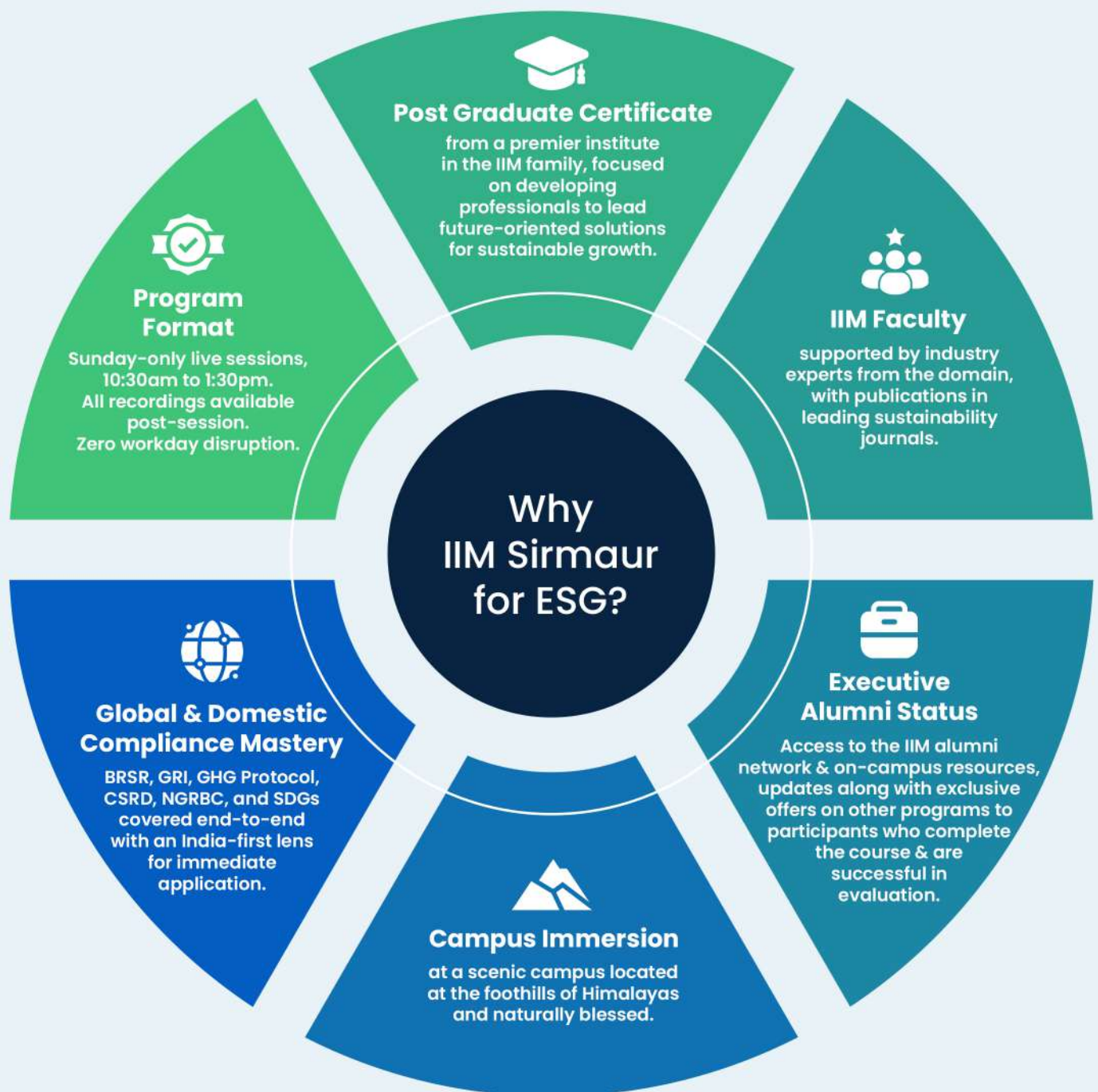
**IIM Sirmaur** offers **PhD, MBA, Executive MBA, & BMS Programmes**. In these programmes, **IIM Sirmaur** operationalizes its mission, "To develop and foster professionals with competencies in creating & leading future-oriented solutions for sustainable growth, adhering to the highest standards of ethical and human aspects of work in Himachal Pradesh, India, & the world." Hence, sustainability is a key aspect of its programmes.



The permanent campus at **Dhaulta Kuan, Sirmaur**, is set against dense Himalayan forest, giving participants a campus immersion experience where sustainability is a living, breathing context, not just a classroom subject.

# Why IIM Sirmaur for ESG

An IIM That **Lives** What It Teaches



# Message from the Director



**Professor Prafulla Y. Agnihotri**  
Director  
Indian Institute of Management Sirmaur



Greetings from **IIM Sirmaur**,

Established in 2015, the Indian Institute of Management Sirmaur is rapidly carving a niche for itself among India's premier management institutions. Guided by a strong vision to be counted among the country's leading B-schools, the Institute is anchored in academic rigor, impactful research, & a deeply participant-centric approach to learning.

Set against the tranquil backdrop of the Himalayas, IIM Sirmaur offers a distinctive learning environment that goes beyond conventional education. The campus fosters introspection, responsible leadership, & a strong commitment to sustainability—qualities that are indispensable in today's complex & evolving global business landscape.

The Institute's faculty form the cornerstone of its academic strength. With complete academic freedom, a highly supportive research ecosystem, & encouragement to engage with reputed journals and prestigious international conferences, faculty members actively contribute to advancing knowledge & practice in management.

In line with the emerging needs of industry and the growing complexity of regulatory environments, IIM Sirmaur offers Post Graduate Certificate Programmes in a blended format through its Long Duration Programme (LDP) Department. These programmes are thoughtfully designed to integrate robust conceptual frameworks with real-world application, enabling participants to develop future-ready capabilities and lead with clarity and confidence.

We look forward to welcoming aspiring professionals to these programmes partnering with them in shaping a journey of meaningful growth, responsible leadership, and lasting impact.

# Core Competencies

## Skills that set you apart

This programme develops six high-demand competencies that professionals and organisations are actively seeking. By the end of this programme, you will have the knowledge, frameworks, and practical experience to lead ESG strategy and reporting functions in any organisation.



### Embed Sustainability in Business

Drive competitive advantage, long-term value creation, brand visibility, & customer loyalty by integrating sustainability into core business strategy.



### Interpret and Respond to ESG Policy

Navigate global and national ESG regulations and reporting standards through applied frameworks, real-world cases, and cross-sector perspectives.



### Gain Critical Insights into Global Sustainability

Analyse sustainability trends, benchmark against global best practices, and translate emerging signals into strategic decisions for your organisation.



### Structure Green Finance

Understand ESG-linked capital markets, green bonds, carbon pricing mechanisms, and risk assessment frameworks to participate credibly in sustainability-driven financial decisions.



### Manage Sustainability Risk

Identify, assess, and mitigate ESG risks across operations and supply chains, minimising business impact while creating value for stakeholders.



### Apply AI to Live ESG Reporting

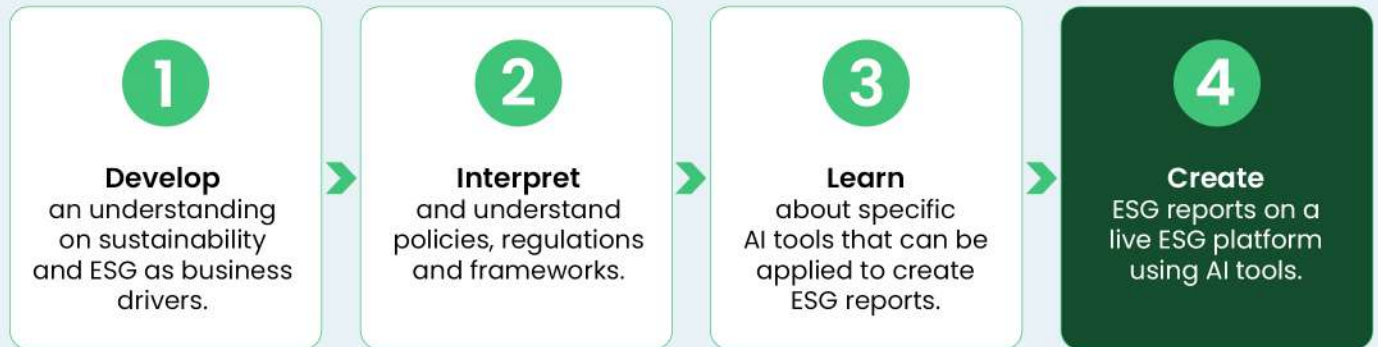
Use AI-enabled tools on an enterprise ESG platform to build BRSR, CBAM, and GHG Protocol-compliant reports, a hands-on, portfolio-ready output you produce during the programme itself.

Sports Building

# About the Programme

Practical. Rigorous. IIM-Certified.

## Knowledge



## Experiential Learning

The only IIM programme where you graduate with real ESG reports you built yourself. While most ESG programmes stop at theory, this programme bridges the gap between knowledge and practice through an AI-powered enterprise platform. Participants do not just learn frameworks; they implement them.

### Measure Your Carbon Footprint

Use AI that interprets receipts, invoices, and operational documents to automatically map data to the correct Scope 1, 2, and 3 emission categories. Build a verifiable GHG inventory for any organisation.

### Generate Regulatory Reports

Produce BRSR, GHG, CBAM, and ESG reports from your assessed data. Filter by scope, customise for your context, and download submission-ready reports.

### Track Performance and Carbon Credits

Access a live dashboard via API integration to monitor emission breakdowns, carbon credit purchases, offsets, and neutrality progress. Use AI-generated insights from your emission summary to guide decisions.

### Offset and Certify

Offset and Certify Your Impact  
Explore verified offset projects, purchase carbon credits, retire them against your emissions, and generate recognised certificates as proof of your sustainability commitments.

# Programme Curriculum

## Your Learning Journey

This program is designed for professionals seeking to lead sustainability & ESG initiatives in an increasingly complex business and policy environment. It develops strategic, regulatory, and leadership capabilities required to integrate sustainability into their market strategies, organizational decision-making, and governance systems. Through applied frameworks, real-world cases, and cross-sector perspectives, participants learn how ESG considerations influence competitiveness, risk, innovation, & stakeholder trust. The program emphasizes practical problem-solving, ethical leadership, and long-term value creation, enabling participants to translate sustainability commitments into credible, measurable, and scalable business impact across industries.

### MODULE 1

#### CSR & ESG STRATEGIES

- Understanding CSR Mandate & ESG Compliance
- CSR Status Analysis
- CSR & ESG Strategies for Organizational Leadership

### MODULE 2

#### SUSTAINABILITY STRATEGY & ORGANIZATIONAL LEADERSHIP

- Sustainability Strategy Integration
- Green Finance & Risk Management
- Organizational Leadership through Innovations

### MODULE 3

#### ESG REPORTING, AUDITING, & ASSURANCE

- ESG Reporting Frameworks
- ESG Auditing & Assurance
- Reassurance Strategies with Legal/Regulatory Compliances

### MODULE 4

#### DIGITAL INNOVATION WITH ARTIFICIAL INTELLIGENCE

- Role of AI
- ESG Data Management & AI Tools
- Risks & Ethical Concerns in Using AI

### MODULE 5

#### EXPERIENTIAL LEARNING ON LIVE ESG PLATFORM

- Data Collection & Framework Mapping
- Materiality Assessment & Carbon Management
- BRSR, CBAM, GHG Report Creation

### MODULE 6

#### CAMPUS IMMERSION

- Group Learning
- Assessment/Evaluation (Faculty Discretion)

IIM Sirmaur Entry Gate

# Your Program Directors

## Learn from Distinguished Academicians

The programme is led by **IIM Sirmaur's** own faculty – researchers and educators with deep domain expertise, active publication records, and industry consulting experience.



**Dr. Devika Vashisht**

Dr. Vashisht holds a PhD in Management from IBS Hyderabad (IFHE University) and was a Visiting Research Scholar at the Fogelman College of Business and Economics, University of Memphis, Tennessee, USA. She has also participated in faculty exchange programme with the Paris School of Business, France.

Her research spans brand management, advertising strategy, consumer persuasion, and marketing research, with more than 25 publications in ABDC and Scopus-listed journals including the A\*-ranked European Journal of Marketing. She brings to this programme deep expertise in stakeholder engagement, sustainability communications, and how organizations build credibility with audiences, capabilities central to ESG reporting and disclosure practice. Dr. Vashisht was awarded the Best Teacher Award at IBS Gurgaon in 2019, and has received FIVE Best Paper Awards at the Society for Marketing Advances Conference (San Antonio, USA, 2015), the IIM Kashipur International Marketing Conference (2015), the Pan-IIM World Management Conference (IIM Lucknow, 2017), the 3rd PRISM International Conference (BIMTECH, Greater Noida, 2023) and MICA's International Marketing Conference (2025).

Marketing Strategy

Sustainability Communications

Brand Management

Consumer Persuasion



**Dr. Santosh Gedam**

Dr. Gedam brings a rare depth of cross-disciplinary educational & professional expertise to this course. He holds a PhD from IIM Ahmedabad, an MBA from IIM Bangalore, an MSc in Development Practice from TISS Mumbai, an LLB, & a BTech in Chemical Engineering.

His professional experience in the petroleum sector gave him experience in the ESG-relevant domain. He further built theoretical knowledge in his PhD in the policy sector.

A combination of scholarship in management, public policy, engineering, law, & development studies equips him to teach ESG and CSR from a management, technical, & policy standpoint. Prior to academia, he primarily worked with a multilateral organization (UNICEF), the central government (Prime Minister's Fellow), & a central PSU (BPCL).

His research examines forest policies & their implementation. His work is under review in commons & policy development journals.

Public Policy

ESG Governance

SDG Frameworks

Environmental Rights

Policy Implementation

# Admission Process



## Pedagogy



**Participative and Interactive Learning:** Case studies, live discussions, and peer-led sessions for applied understanding across real-world ESG scenarios.



**Assignments, Simulations and Projects:** Hands-on assignments, projects, and simulations for applied learning and analytical problem-solving.



**Experiential Learning on a Live ESG Platform:** Balance theory with practice through direct work on an enterprise ESG platform, creating outputs that can be applied at the workplace.

## Program Format

The program offers 70 hours of learning in a blended mode. IIM faculty led sessions including master classes from industry experts for participant centred learning include:

---

Live online sessions, including case studies and projects for 54 hours.

---

Experiential Learning on a live ESG platform for 10 hours.

---

Campus immersion learning for 6 hours.

---

# Eligibility, Evaluation & Alumni Status

## Eligibility Requirements

- **Work Experience:** Self-employed or Working Professionals with a minimum of 2 years of work experience.
- **Education:** Graduates/Postgraduates/Diploma (10+2+3) in any discipline with 50% marks

## Evaluation Criteria

To be eligible to receive the PG Certificate from IIM Sirmaur, participants must meet the following criteria as part of their course completion:

**60%+**

Marks in Assessments

**80%+**

Attendance Required

## Alumni Status

Participants who complete the programme successfully will be awarded an Executive Alumni Status of IIM Sirmaur. They will be required to apply separately to register their name along with the fee. Currently the fee for lifetime membership is ₹10,000+GST.

### Benefits available to Executive Education Alumni

- Access to IIM Sirmaur alumni portal
- Brochures, updates and communication from the institute.
- Access to in-campus resources.
- Exclusive offers on other programs.
- Official email ID of the institute and an e-ID card.

IIM Sirmaur reserves the rights to modify the above conditions at its discretion at any time without notice.

# Investment & Certification



## Term & Conditions

- PG Certificate of Successful Completion on meeting the evaluation and attendance criteria.
- PG Certificate of Participation on meeting the attendance criteria but not meeting the evaluation criteria.
- No certificate if both evaluation and attendance criteria are not met.

## Programme Fee

₹1,27,440

- ✓ Inclusive of 18% GST
- ✓ Campus immersion lodging & boarding included
- ✓ Enterprise ESG platform access included
- ✓ All session recordings included
- ✓ IIM Sirmaur certification fee included

## Fee Structure

Fee	Amount	Payable
Registration	1180	On Registration
First Instalment	42087	On Pre enrolment Offer
Second Instalment	42087	Month 2 of Program
Third Instalment	42086	Month 4 of Program
Total	127440	

Fees paid are non refundable and non transferable. All fees to be paid to **IIM Sirmaur** directly.

# Programme Partner

## About myDiksha

myDiksha is an innovative educational initiative focused on aligning academic learning with industry demands. Founded by industry experts and advised by leaders from top institutions, it provides career-focused certification programs in Finance, Technology, Management, and ESG. Through partnerships with premium institutes and an emphasis on practical skill-building, myDiksha aims to boost professionals' employability and support companies in recruiting well-prepared talent.

myDiksha is collaborating with a technical partner to transform theoretical knowledge into practical implementation skills through hands-on experience with industry-leading technology.

## Important Terms & Conditions

- Dates are subject to change at the discretion of the institute.
- Programme fee is non-refundable and non-transferable.



## Ready to Lead the Sustainable Economy?

Applications are open for the upcoming batch.  
Sunday-only classes mean zero compromise on your career, just a massive upgrade to it.

+91 8383814863, +91 7678592283, +91 8383808900